

# HEALTHUNIVERSE

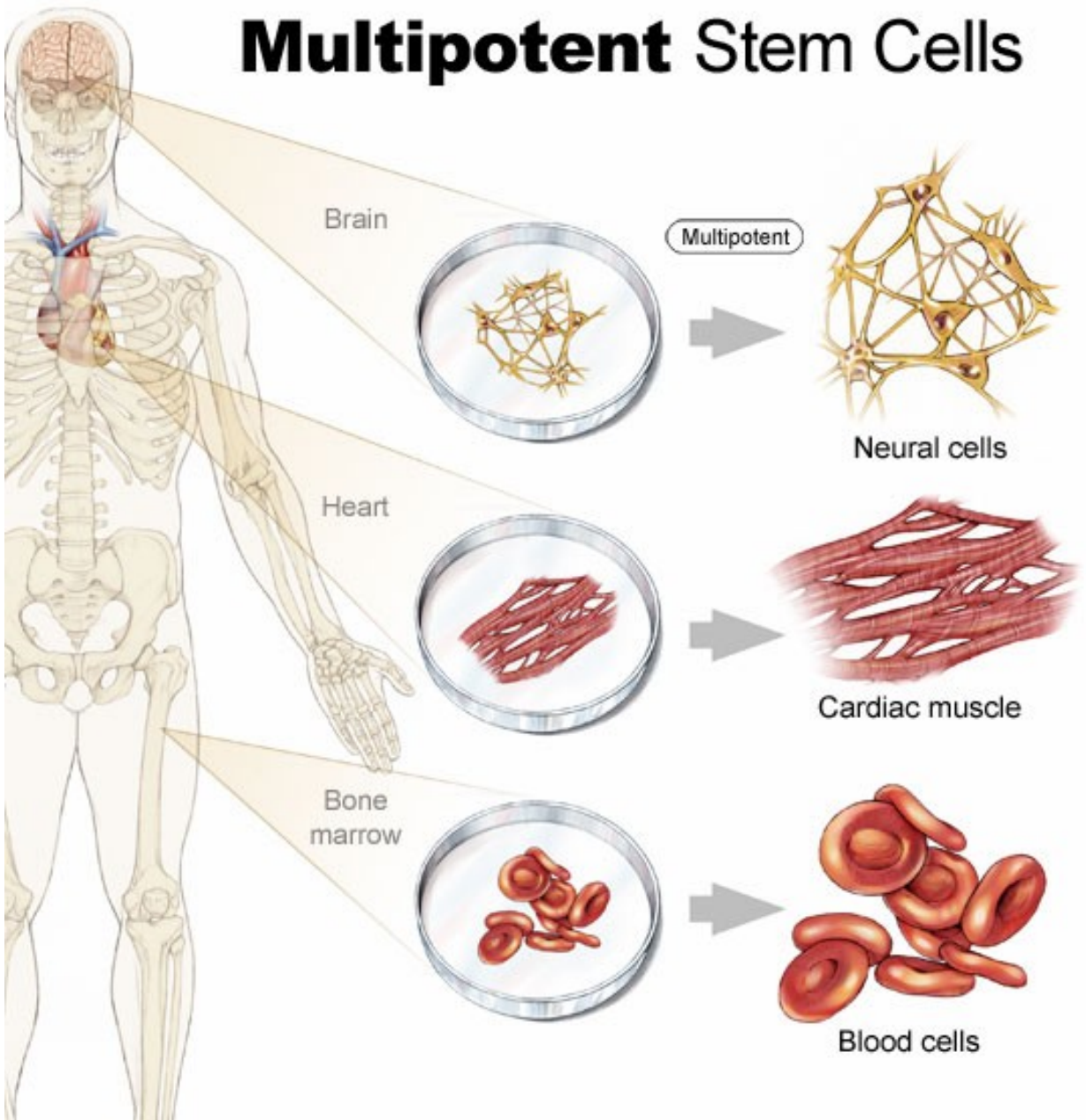
RESEARCH AND DEVELOPMENT  
COLLABORATIVE STEM CELL PROJECT

# BACKGROUND

- STEM CELLS HAVE A LONG CONTROVERSIAL HISTORY
- MANY CELLS OF ORIGIN HAVE BEEN UTILIZED AND DEVELOPED (UNIVERSITY OF PITTSBURGH)
- CARTILAGE, BONE, NERVE, MUSCLE, CARDIAC, BLOOD VESSELS

SCIENTIFIC BASIS

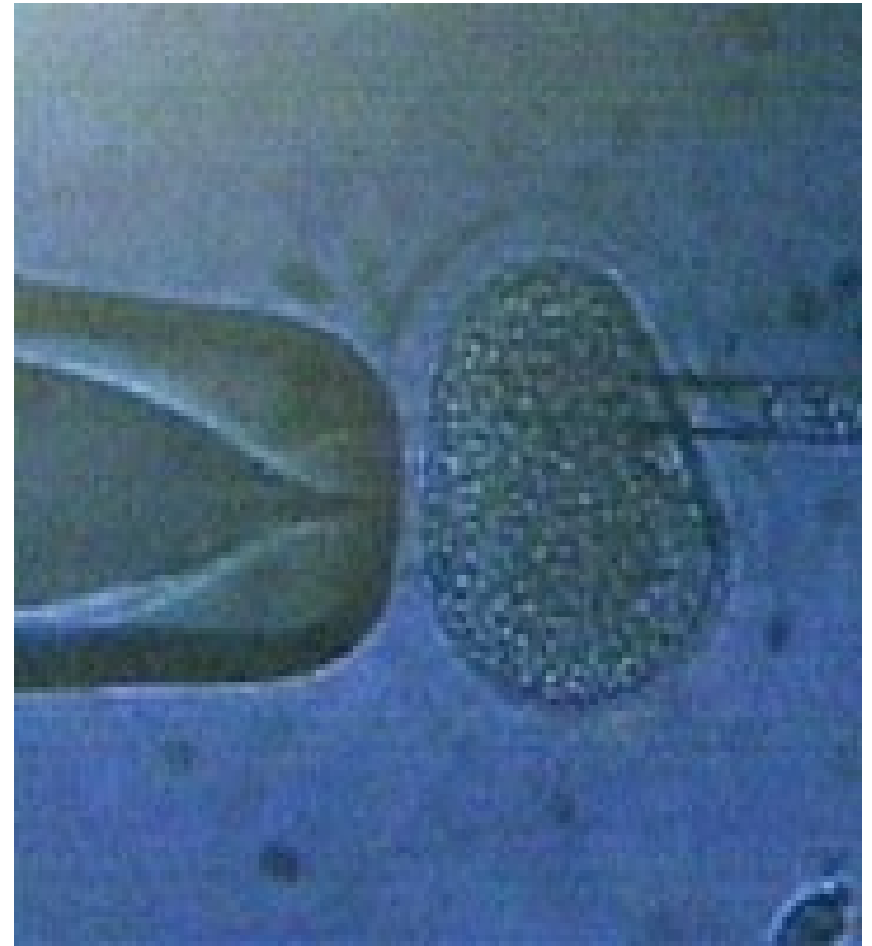
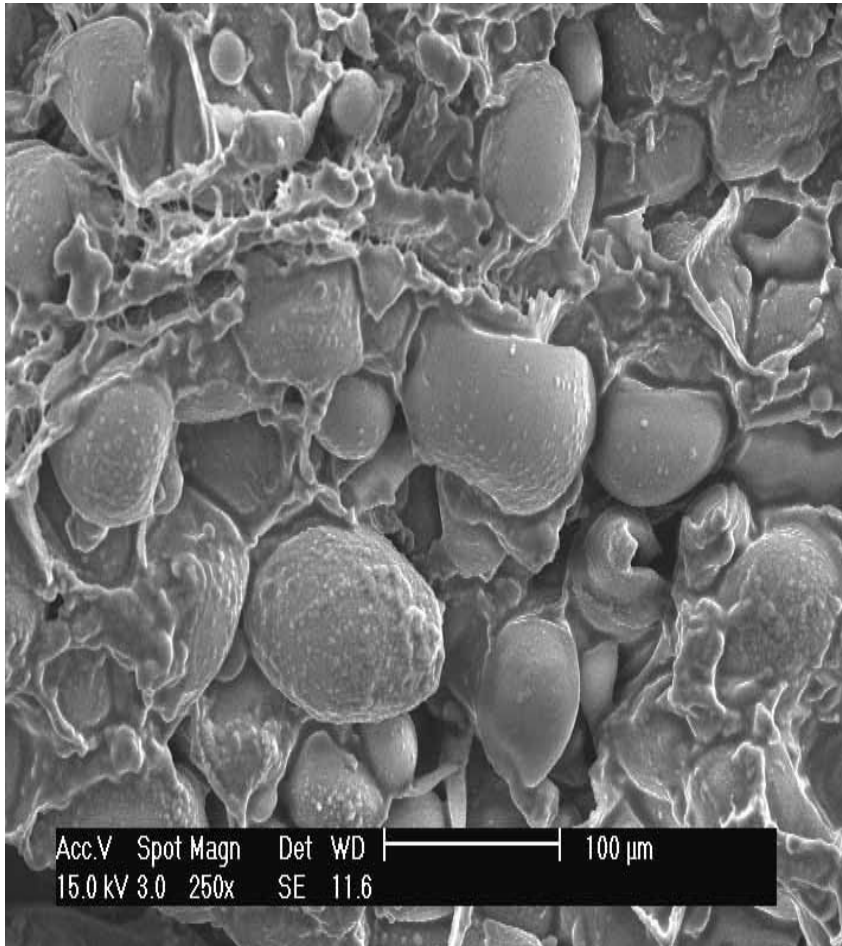
# Multipotent Stem Cells



# THEORY

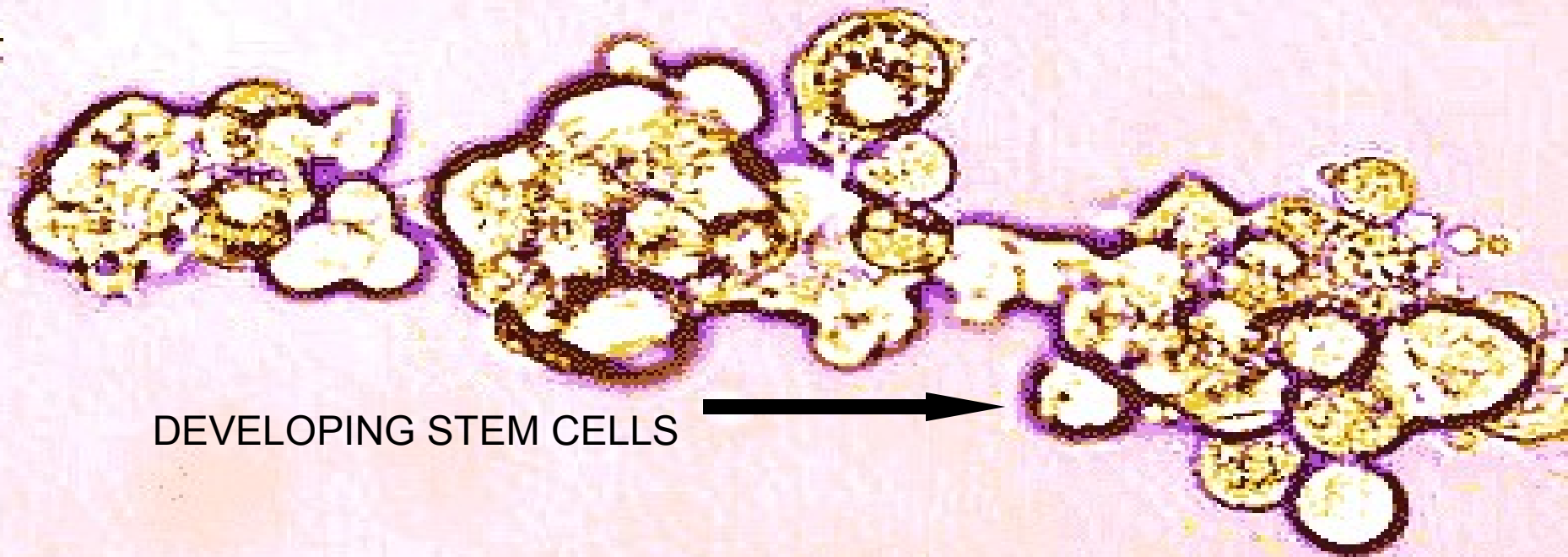
- 50-100 MILLION STEM-LIKE CELLS FROM  $\frac{1}{2}$  POUND OF FAT TISSUE
- UTILIZATION OF ADULT STEM CELLS (NON CONTROVERSIAL)
- LARGE SCOPE OF MEDICAL AND SCIENTIFIC APPLICATIONS

# FAT CELLS



# METHOD

- FAT TISSUE FROM HEALTHY HUMAN SUBJECTS
- ISOLATE STEM LIKE CELLS
- STIMULATE “STEM” CELLS TO INCORPORATE A CELL LINE OF INTEREST
- CULTURE DIFFERENTIATED (NEW) “STEM” CELL LINE
- REPRODUCIBILITY



DEVELOPING STEM CELLS



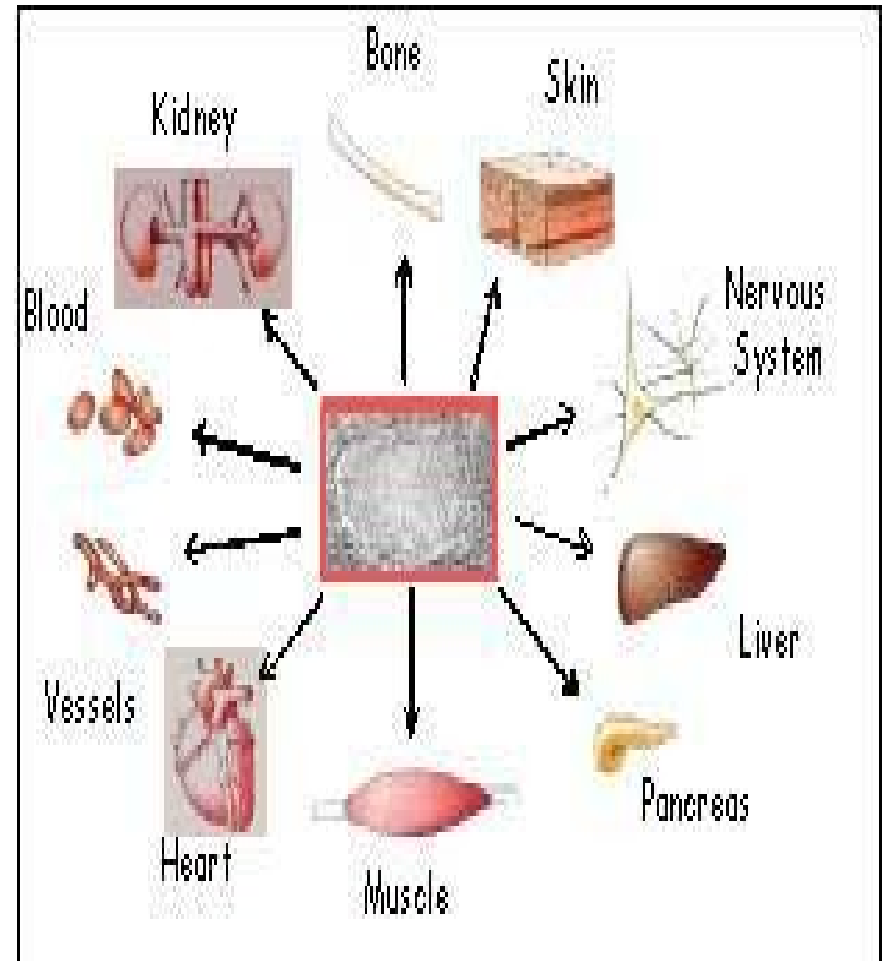
# EXPERIMENTATION

- UCI
- UNIVERSITY OF PITTSBURGH
- UNIVERSITY OF TEXAS
- HEALTHEUNIVERSE



# CELL LINES

- FAT
- EPIDERMIS
- CARTILAGE
- BONE
- BLOOD VESSELS



# APPLICATIONS

- COSMETIC SURGERY
- DERMATOLOGY
- RECONSTRUCTIVE SURGERY
- ORTHOPAEDIC SURGERY
- VASCULAR SURGERY
- CARDIAC SURGERY
- WOUND CARE

# APPLICATIONS



# COMMERCIALIZATION

- STEM CELL THERAPY MARKET WILL REACH \$30 BILLION BY 2010
- PATENTED APPLICATIONS SECURE MARKET SHARE
- U.S. BASED CORPORATE HQ FOR DOMESTIC MARKETS
- SINGAPORE BASED R&D HQ FOR GLOBAL MARKETS